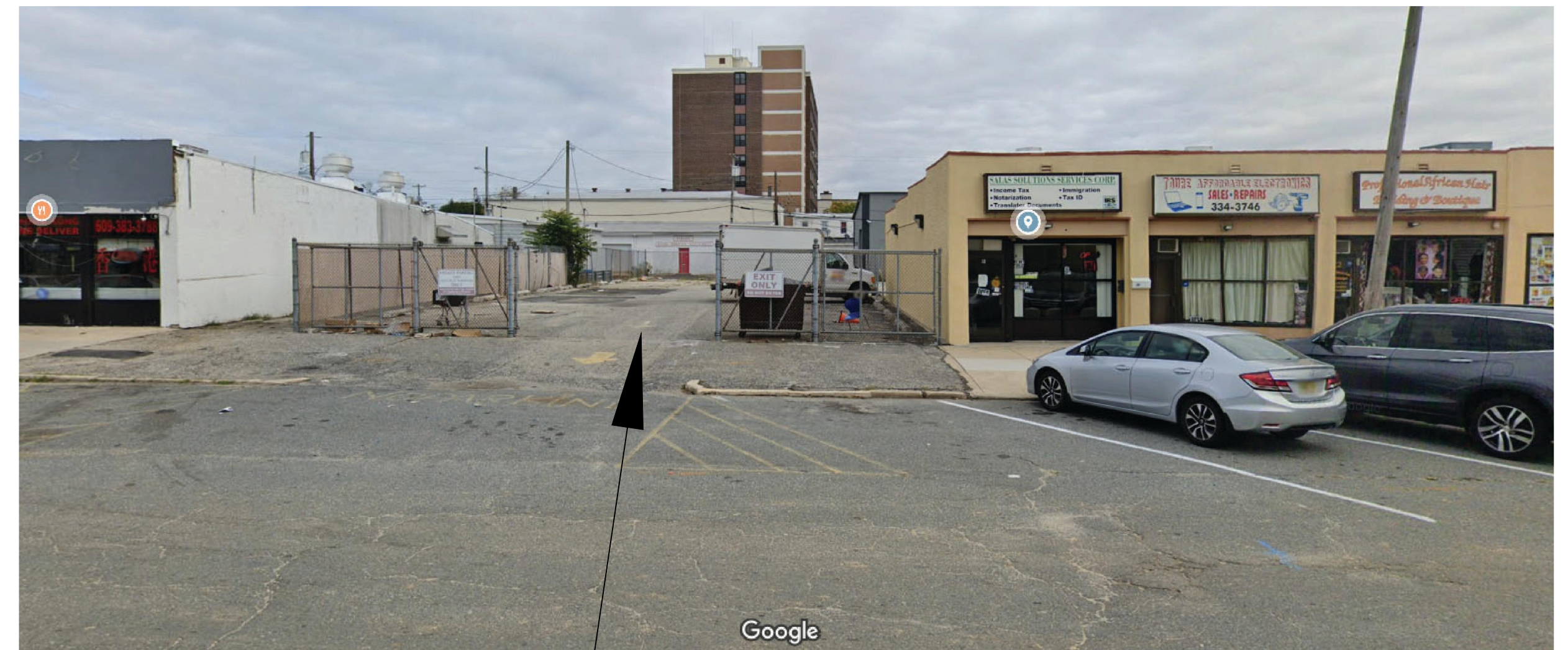


SITE — ORTHO MAP
1" = 40'



SITE — GOOGLE STREET VIEW
NTS

PRELIMINARY AND FINAL MAJOR SITE PLAN		
ORTHO AND STREET VIEW EXHIBIT		
14-16 & 18-28 OLD TURNPIKE BLOCK 128 LOTS 2 & 11 CITY OF PLEASANTVILLE , ATLANTIC COUNTY, NEW JERSEY OWNER: CASA NOVA TODAY LLC		
HALER CONSULTING PROFESSIONAL ENGINEERING SERVICES	640 HERMAN ROAD, UNIT 1 JACKSON, NEW JERSEY 08527 PH.(732) 351-2583 F.(732) 806-7439 OFFICE@HALERCONSULTING.COM COA 24GA28321300	PROJECT NO.
		21-130
		SCALE
		AS SHOWN
		DATE
ERIC HALPERT, PROFESSIONAL ENGINEER AND PLANNER NJ PE LIC. NO. 55771 NJ PP LIC. NO. 6488		04-05-2022
		SHEET NO.
		EXHIBIT A